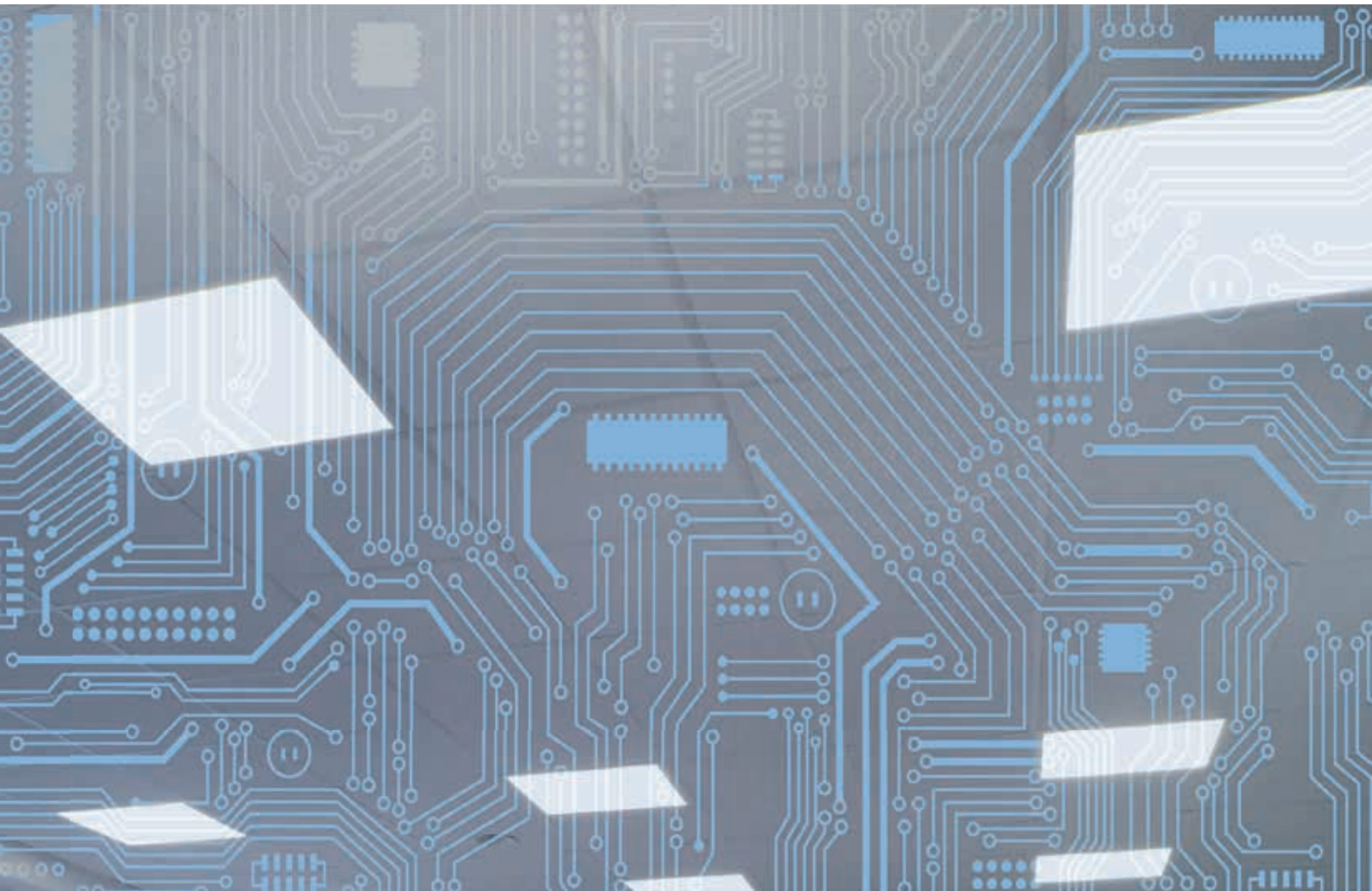
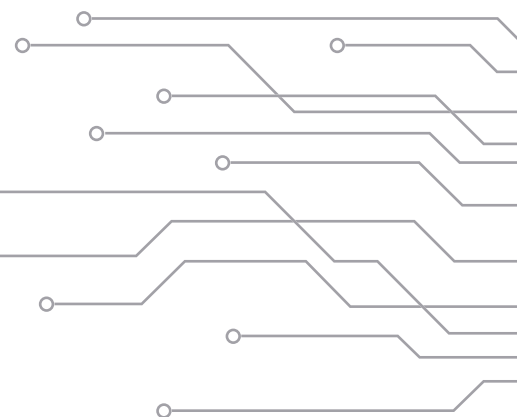


# REGIOLUX



## Plug-and-play Luminaire sets

Worry-free lighting solutions



# All-inclusive Luminaire Sets

A luminaire set is the ideal starter pack for lighting systems with modern lighting management for offices. The individual components are matched to one another. Designed as a complete solution, ready to be used without errors or programming effort. The sets follow the plug-and-play concept. So there will be no surprises. The direct:LC controllers are pre-programmed and also designed to meet the technical

lighting requirements of a double workstation. They are ready to plug straight in, along with sensors and pre-assembled cables. This plug-and-play concept makes it easy to implement standard applications and refurbishments. Luminaire sets are worry-free solutions from Regiolux that address all your needs.



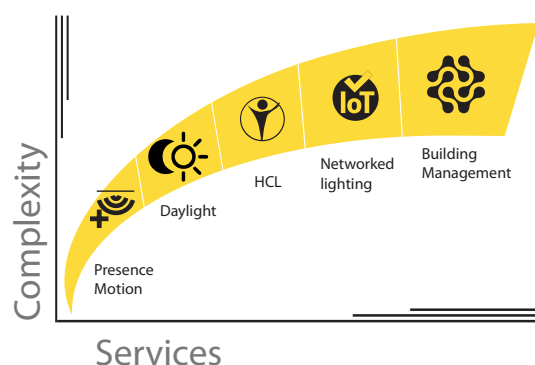
## Advanced Services

The previously finished lighting concepts from Regiolux with EnOcean components are easy and incredibly versatile to upgrade. With the integration of further intelligent components, Regiolux's Advanced Services team is at your side with its know-how.



vcard  
Advanced Services  
T 09525 89-260  
F 09525 89-261  
[service@regiolux.de](mailto:service@regiolux.de)

# Prepared



As the functional scope of a lighting system increases, so the complexity of planning increases too. In addition, the number of individual components increases, systems are connected and equipped with intelligent modules. In order to cope quickly and reliably with the numerous requirements, ready-to-connect luminaire sets are available for standard applications. On top of this, when individual tasks need to be solved, Regiolux's Advanced Service takes care of this. That means technological challenges are also mastered across systems.

## Plug-and-play luminaire sets Standardised and fully configured



[www.regiolux.de/index.php?id=59](http://www.regiolux.de/index.php?id=59)

panella set p. 4

Daylight control and presence detection

teno set p. 6

Daylight control and presence detection

teno TW set p. 8

Tunable White technology

teno HCL set p. 10

Tunable White technology for Human Centric Lighting

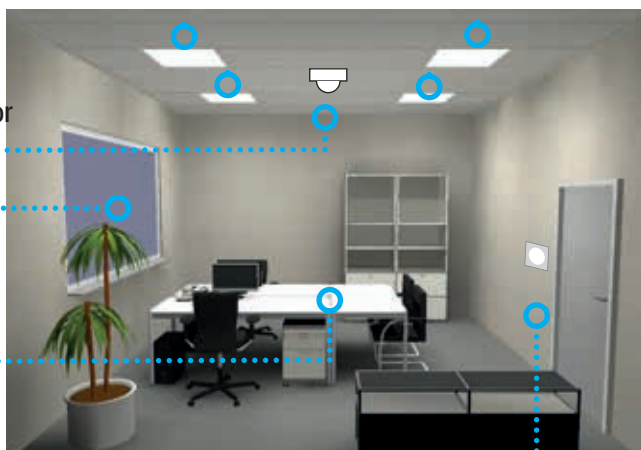
# Upgrade the office

## Pre-assembled luminaires, plug-and-play

Recessed ceiling sensor

Daylight recognition

Presence detection



Wall switch

Modern lighting systems accessing to intelligent sensors and wireless technology. Controlling these lighting systems draws together the key aspects of flexibility and energy efficiency. A large number of parameters can be controlled conveniently via software: on/off/dimming, free control of light level, free control of light colour (with DT8), scene selections, group selections, individual addressing, timer, light control, motion detection, settings of basic DALI parameters.





# panella set

Luminaire set for daylight control and presence detection

Luminaires and sensors are equipped with plug-and-play, pre-assembled 3m long connecting cables. Power is supplied via a 3m long Schuko power supply cable, which is also pre-assembled. The entire electrical connection can be completed without tools.

The sensor is a presence/motion sensor with daylight control. The luminaires are freely adjustable via the DALI output control.

Threshold value, setpoint value, run-on time and orientation light can be conveniently set via the remote control. Basic function is available straight away via the factory settings following initial start-up.

Optionally, a button can be connected to the sensor to start the semi-automatic control or for manual operation.



## Set components

### Daylight control and presence detection



#### Mounting/installation:

- Ceiling installation: ceilings with visible T-rails

#### Set details:

##### PEMP/600 LC16 – set

Luminaire set with control unit and pre-assembled power supply cables

Consisting of:

- 4 panella PEMP/600 LED 3700 840 DALI
- 1 DALI built-in ceiling sensor
- 1 remote control
- with pre-assembled connecting and power supply cables 3m
- plug-and-play
- daylight- and sensor-dependent control
- can be configured via remote control

##### PEMP/625 LC16 – set

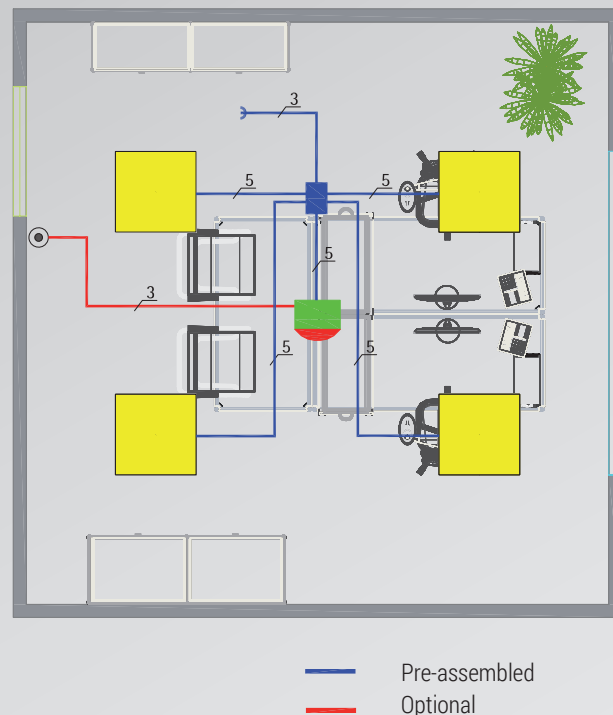
Luminaire set with control unit and pre-assembled power supply cables

Consisting of:

- 4 panella PEMP/625 LED 3800 840 DALI
- 1 DALI built-in ceiling sensor
- 1 remote control
- with pre-assembled connecting and power supply cables 3m
- plug-and-play
- daylight- and sensor-dependent control
- can be configured via remote control

## Wiring diagram

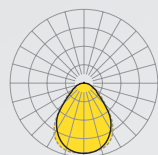
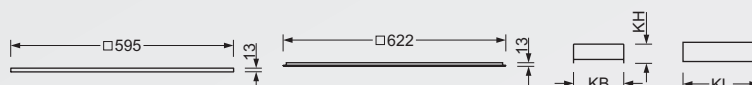
### panella luminaire set for a double workstation



**Planning parameters for all sets and up to 20m<sup>2</sup> floor space:**  
 double workstation with average lighting level 500lux,  
 room height 3 m, standard reflection factors ceiling/  
 walls/floor: 70%/50%/20%.

Dimensions	Versions	LxWxH/DxH	T	KL	KB	KH	MLxMW		Et <sup>1)</sup>
PE./600	LED	595 x 595 x 13	13	103	67	30	600 x 600		100
PE./625	LED	622 x 622 x 13	13	144	42	29	625 x 625		100

<sup>1)</sup>e = minimum installation depth  
 (but only when ceiling construction and luminaires are installed simultaneously): 100 mm



$\eta_{LB}$  100 %  
 lm/W 119  
 Direct/indirect 98/2 %  
 UGR lat./long. 18.1/18.4  
 VDU 65° < 3000cd/m<sup>2</sup>

Set type	Lamps	lm/W	P <sub>sys</sub> [W]	Colour	Ballast	Art. no.	
<i>Diffuser micro-prismatic direct distribution luminaire set</i>							
panella set PEMP/600 LC16	LED 3700 840	119	32	vw	DALI	8425 6016 650	15.50
panella set PEMP/625 LC16	LED 3800 840	117	32	vw	DALI	8425 6015 650	16.30

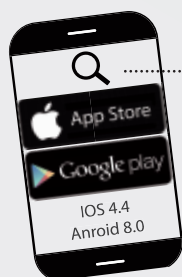


## teno set

Luminaire set for daylight control and presence detection

All luminaires are equipped with plug-and-play, pre-assembled 3m long connecting cables. Power is supplied to the master lamp via a 3m long Schuko power supply cable, which is also pre-assembled. The entire electrical connection can be completed without tools.

Presence control with/without daylight control is possible via the sensor and controller installed in the master luminaire (teno LC01). The luminaires are freely adjustable via the DALI output control. Basic functions such as setpoint, follow up time and advanced features can be easily set via a free app. Basic function is available straight away via the factory settings following initial start-up. Optionally, a switch can be connected to the master lamp to start the semi-automatic control or for manual operation.

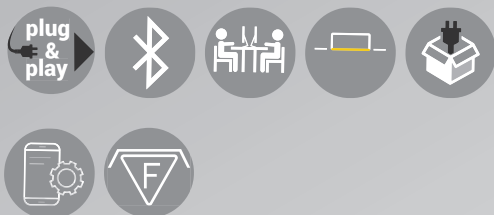


OSRAM BT CONTROL



## Set components

### Daylight control and presence detection



#### Mounting/installation:

- Ceiling installation; ceilings with visible T-rails

#### Set details

Luminaire set for daylight control and presence detection

#### TNEMP/600 LC01 - set

Luminaire set with control unit and pre-assembled power supply cables

Consisting of:

- 1 teno TNEMP/600 LED 4000 840 LC01
- 3 teno TNEMP/600 LED 4000 840 DALI
- with pre-assembled connecting and power supply cables 3m
- plug-and-play
- daylight- and sensor-dependent control
- can be configured and controlled via Osram App

#### TNEMP/625 LC01 - set

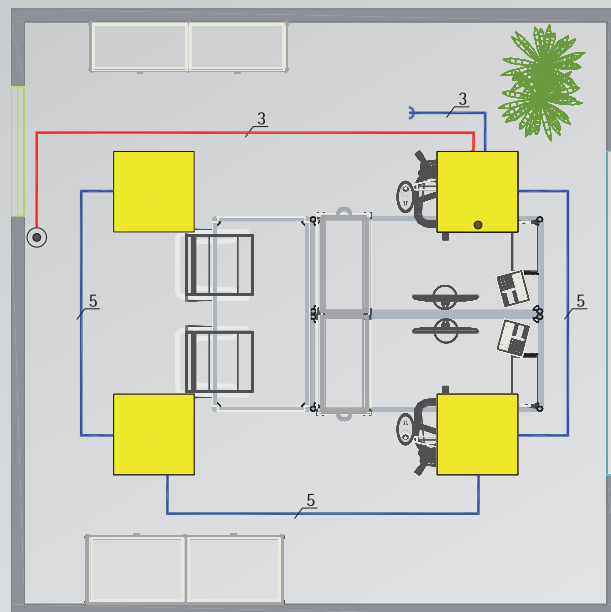
Luminaire set with control unit and pre-assembled power supply cables

Consisting of:

- 1 teno TNEMP/625 LED 4000 840 LC01
- 3 teno TNEMP/625 LED 4000 840 DALI
- with pre-assembled connecting and power supply cables 3m
- plug-and-play
- daylight- and sensor-dependent control
- can be configured and controlled via Osram App

## Wiring diagram

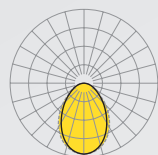
### teno luminaire set for a double workstation



— Pre-assembled  
— Optional

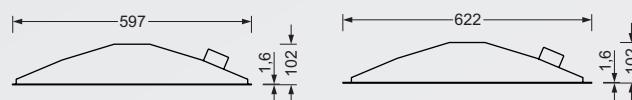
#### Planning parameters for all sets and up to 20m<sup>2</sup> floor space:

double workstation with average lighting level 500lux,  
room height 3 m, standard reflection factors ceiling/  
walls/floor: 70%/50%/20%.



$\eta_{\text{Lb}}$  100 %  
lm/W 116  
Direct/Indirect 100/0 %  
UGR lat./long. 18.6/18.9  
VDU  $65^\circ < 3000\text{cd/m}^2$

Dimensions	Versions	LxWxH/DxH	T	MLxMW	Et
TNE./600	LED	597 x 597 x 102	100	600 x 600	250
TNE./625	LED	622 x 622 x 102	100	625 x 625	250



Set type	Lamps	lm/W	P <sub>sys</sub> [W]	Colour	Ballast	Art. no.	kg
<i>Diffuser micro-prismatic direct distribution luminaire set</i>							
teno set TNEMP/600 LC01	LED 4000	116	35	vw	DALI	8425 5081 670	20.70
teno set TNEMP/625 LC01	LED 4000	116	35	vw	DALI	8425 5082 670	21.50





# teno TW-set

Luminaire set in Tunable White technology

Luminaires and the controller box are equipped with plug-and-plug, pre-assembled 3m long connecting cables. Power is supplied to the controller box via a 3m long Schuko power supply cable, which is also pre-assembled. The entire electrical connection can be completed without tools.

With the EnOcean controller, the luminaires are freely adjustable via the DALI output control. The EnOcean wall switch allows manual dimming and colour temperature changes within Tunable White. Full functionality is available straight away via the pre-programmed controller following initial start-up.



## Wall switch functionality

Switch rocker left

- Short push up: off
- Short push down: on
- Long push up: dim down
- Long push down: dim up

Switch rocker right

- Short push up: colour temperature gradually cooler
- Short push down: colour temperature gradually warmer
- Long push up: colour temperature continuous cool
- Long push down: colour temperature continuous warm





## Set components

### Tunable White technology



#### Mounting/installation:

Ceiling installation, ceilings with visible T-rails

#### Set details

Luminaire set in Tunable White technology for manual dimming and colour changing

#### TNEMP/600 DT8 LC17 - set

Luminaire set with control unit and pre-assembled power supply cables

Consisting of:

- 4 teno TNEMP/600 LED 4000 927-965 DALI DT8
- 1 EnOcean control box with controller
- 1 EnOcean button, 4-channel, white
- with pre-assembled connecting and power supply cables 3m
- plug-and-play
- wireless (radio) control for manual dimming and colour changing, pre-programmed

#### TNEMP/625 DT8 LC17 - set

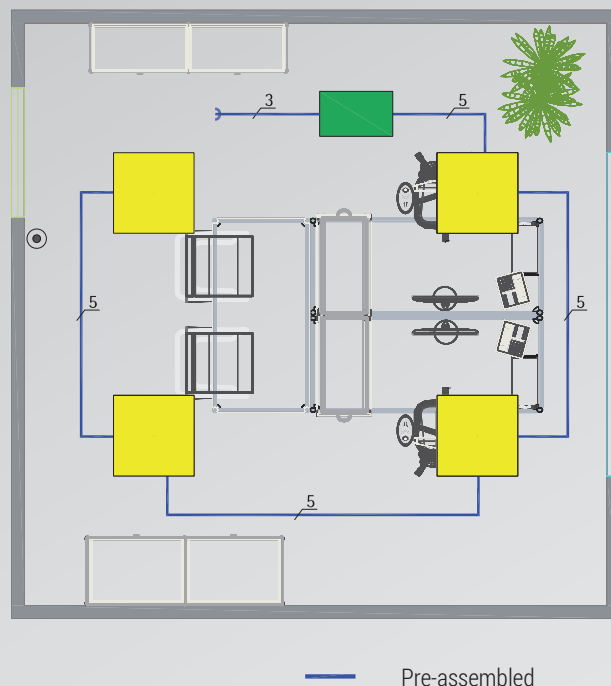
Luminaire set with control unit and pre-assembled power supply cables

Consisting of:

- 4 teno TNEMP/625 LED 4000 927-965 DALI DT8
- 1 EnOcean control box with controller
- 1 EnOcean button, 4-channel, white
- with pre-assembled connecting and power supply cables 3m
- plug-and-play
- wireless (radio) control for manual dimming and colour changing, pre-programmed

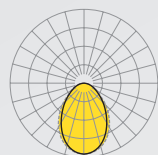
## Wiring diagram

### teno luminaire set for a double workstation



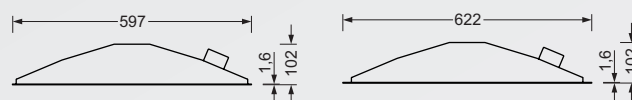
#### Planning parameters for all sets and up to 20m² floor space:

double workstation with average lighting level 500lux, room height 3 m, standard reflection factors ceiling/walls/floor: 70%/50%/20%.



$\eta_{LB}$  100 %  
lm/W 85  
Direct/Indirect 100/0 %  
UGR lat./long. 18.5/18.9  
VDU 65° < 3000cd/m²

Dimensions	Versions	LxWxH/DxH	T	MLxMW	Et
TNE./600	LED	597 x 597 x 102	100	600 x 600	250
TNE./625	LED	622 x 622 x 102	100	625 x 625	250



Set type	Lamps	lm/W	P <sub>sys</sub> [W]	Colour	Ballast	Art. no.	kg
<i>Diffuser micro-prismatic direct distribution luminaire set</i>							
teno set TNEMP/600 DT8 LC17	LED 4000	116	35	vw	DALI DT8	8425 5081 970	21.70
teno set TNEMP/625 DT8 LC17	LED 4000	116	35	vw	DALI DT8	8425 5082 970	22.50



## teno HCL-set

Luminaire set in Tunable White technology for Human Centric Lighting

Luminaires and the controller box are equipped with plug-and-plug, pre-assembled 3m long connecting cables. Power is supplied to the controller box and the timer box via a 3m long Schuko power supply cable, which is also pre-assembled. The entire electrical connection can be completed without tools.

With the EnOcean controller, the luminaires are freely adjustable via the DALI output control. Full functionality is available straight away via the pre-programmed controller following initial start-up.

The colour control is started via the timer box and runs in the controller as a typical HCL graph. The switching times are programmed and usually do not require adjustment. When the lighting is switched on, the light colour and dimming value are outputted according to the values defined at the specified time.

The wall switch is used to turn the lighting on or off in automatic HCL mode.



### Wall switch functionality

Switch short push

up: off

down: HCL mode on



## Set components

### Human Centric Lighting



#### Mounting/installation:

Ceiling installation, ceilings with visible T-rails

#### Set details

Luminaire set in Tunable White technology for Human Centric Lighting

#### TNEMP/600 DT8 LC27 - set

Luminaire set with control unit and pre-assembled power supply cables  
Consisting of:

- 4 teno TNEMP/600 LED 4000 927-965 DALI DT8
- 1 EnOcean control box with controller
- 1 EnOcean timer box for HCL colour control
- 1 EnOcean button, 2-channel, white
- with pre-assembled connecting and power supply cables 3m
- plug-and-play
- wireless (radio) control for Human Centric Lighting pre-programmed

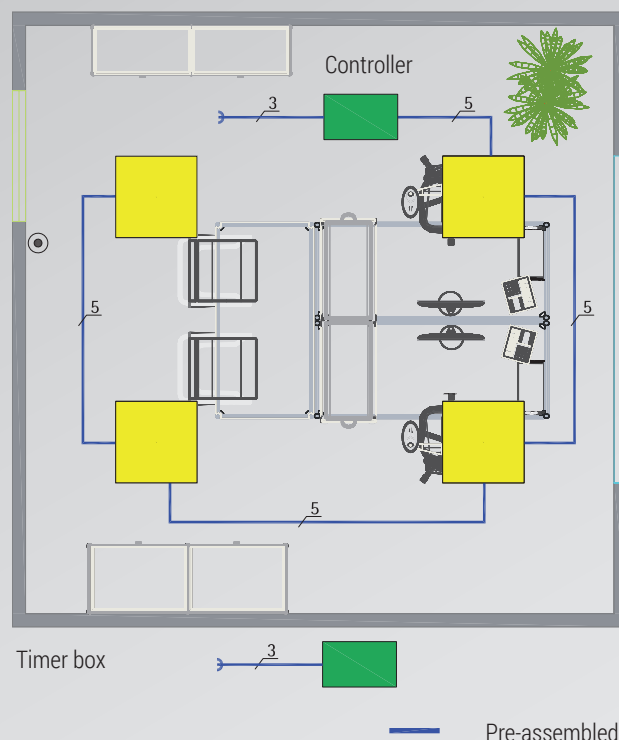
#### TNEMP/625 DT8 LC27 - set

Luminaire set with control unit and pre-assembled power supply cables  
Consisting of:

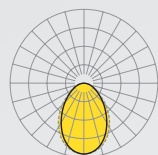
- 4 teno TNEMP/625 LED 4000 927-965 DALI DT8
- 1 EnOcean control box with controller
- 1 EnOcean timer box for HCL colour control
- 1 EnOcean button, 2-channel, white
- with pre-assembled connecting and power supply cables 3m
- plug-and-play
- wireless (radio) control for Human Centric Lighting pre-programmed

## Wiring diagram

### teno luminaire set for a double workstation

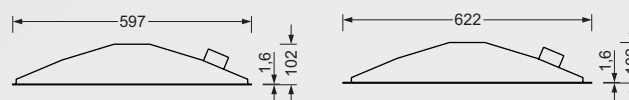


### HCL typical progression



$\eta_{\text{Lb}}$  100 %  
lm/W 85  
Direct/Indirect 100/0 %  
UGR lat./long. 18.5/18.9  
VDU  $65^\circ < 3000\text{cd/m}^2$

Dimensions	Versions	LxWxH/DxH	T	MLxMW	Et
TNE./600	LED	597 x 597 x 102	100	600 x 600	250
TNE./625	LED	622 x 622 x 102	100	625 x 625	250



Set type	Lamps	lm/W	P <sub>sys</sub> [W]	Colour	Ballast	Art. no.	kg
<i>Diffuser micro-prismatic direct distribution luminaire set</i>							
teno set TNEMP/600 DT8 LC27	LED 4000	116	35	vw	DALI DT8	8425 5081 870	21.70
teno set TNEMP/625 DT8 LC27	LED 4000	116	35	vw	DALI DT8	8425 5082 870	22.50

Image index

Page	1	Frank Freihofer Kitzingen DE · BayWa Grosswallstadt DE   zerodesktop · stock.adobe.com
	2	alfa27 · stock.adobe.com
	4	Christian Fischer, Wien AT · Oesterreichs Energie Wien AT   Regiolux DE
	6	Tino Metten Königsberg DE · Lichtwerk GmbH   Regiolux DE
	8	Tino Metten Königsberg DE · Baustoffe May Bamberg DE   Regiolux DE
	10	Inga Paas, Köln DE · Werner-Wicker-Klinik Reinhardshausen DE   Regiolux DE

9999 1621 219 1-A 1000 01/19 MA/SGD subject to change without notice

Regiolux



**REGIOLUX**  
Regiolux GmbH  
Hellinger Straße 3  
D 97486 Königsberg  
T +49 9525 89 0  
F +49 9525 89 7  
info@regiolux.de  
www.regiolux.de